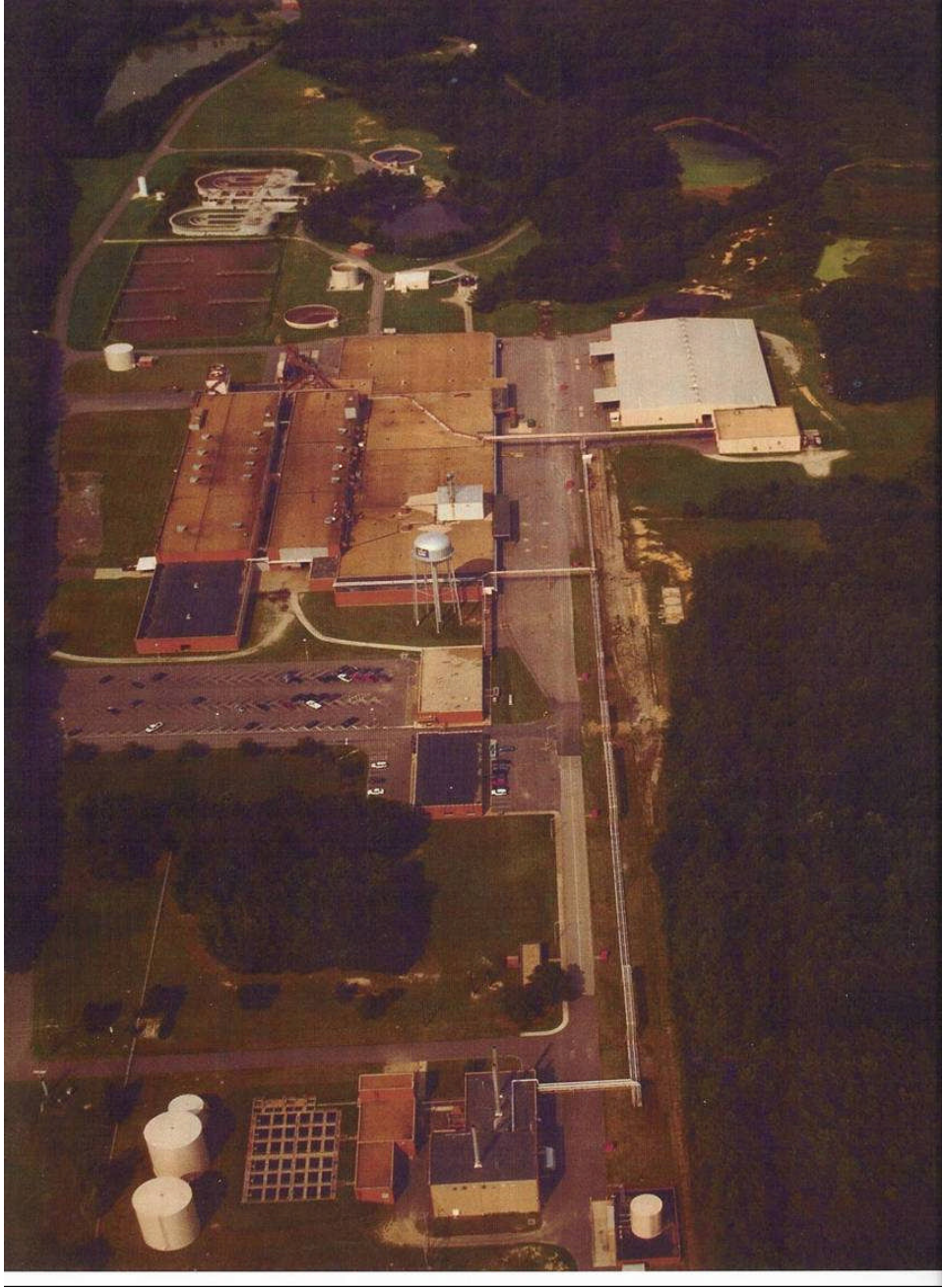




The Sustainability Park

13101 North Enon Church Road

Chester, Virginia 23836



142.7 Acres

- Zoned I-3 (Heavy Industrial)
- Borders Conservation site on the east
 - 2.5 Miles from I-295
 - 6 Miles from I-95

3 Natural Gas / No2 Fuel Oil Babcock & Wilcox Boilers



Discharge Steam Pressure
of 205 psi.

Production psi of 150

Steam production

- 35,000 lb/hr
- 60,000 lb/hr
- 80,000 lb/hr

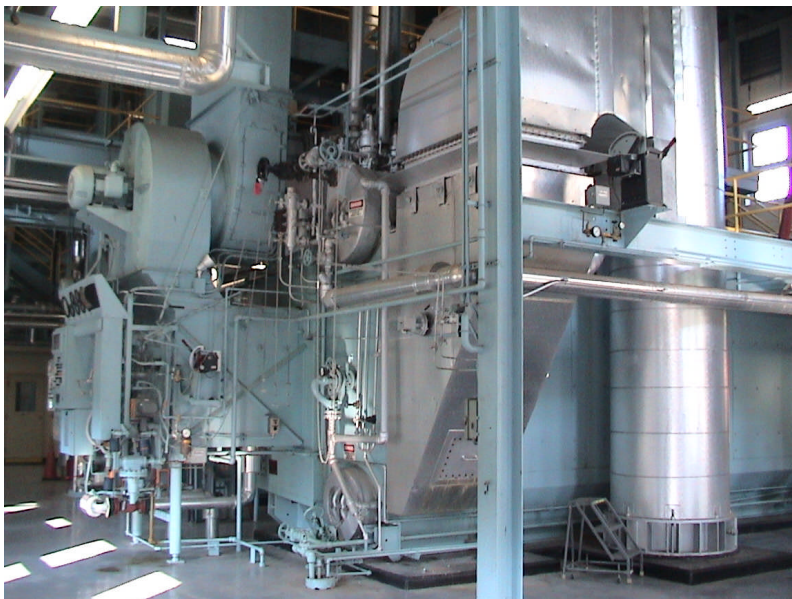
Installed 1992-1995

Approximately 8500 sq ft
building area

DEQ Air Operating
Permit Holder

Alternative fuels may only
require burner and DEQ
permit modifications

On-site boiler water
testing



Water Treatment Plant



3 million gallons per day capability

1.4 MG storage capacity of treated water

Source of water is the James River via river pumping station.

Laboratory for water and wastewater testing



Administrative Office Building



- 8000 sq. ft. building
- 12 furnished offices
- 2 Large Conference Rooms
- Lunch Room
- Internet, Telephone and IT network available
- Badge Security Access
- Additional office configurations possible



Security and Locker Building



9,000 sq. ft. building

24 x 7 Security

Card Access entry

Secured Data Center with fiber backbone

Additional offices available

Locker rooms can be remodeled to suite need



Storage Building

60,000 sq. ft. area

“Dry” Sprinkler System

Ground level entry at
North & South ends

2 loading dock bays

Rail delivery possible

Fiber link to IT system



Manufacturing Building



345,000 sq. ft under roof

Full length loading dock on East side

Loading docks on North and West sides

15 Ton overhead cranes in manufacturing area

Lunchroom area



Warehouse Spaces within Manufacturing Building

Warehouse Sizes

- Door 1 – 35x160
- Door 2 – 47x160
- Door 4/5 – 147x160
- Door 9 – 117x116
- Door 10 – 80x13-
- Door 12 – 60x105
- CM warehouse – 106x176



16 ft. Warehouse ceilings

40 ft ceilings in manufacturing area



Maintenance



Fully equipped 5,400 sq ft maintenance shop

Secured 54x143 parts stock room

Three maintenance offices, two stockroom offices

Two maintenance workrooms

Secured hazardous / combustible materials storage

1,000-gallon unleaded gasoline AST

1,000-gallon diesel fuel storage AST



Manufacturing



Ground level entry at south end for heavy flatbed truck deliveries

Offices and meeting rooms available

Laboratory area within facility

Wastewater Treatment



2.1 MGD Biological Nutrient Reduction Process

VPDES Discharge Permit VA0002780 reissued 12/06/2005

Nutrient limits for Total Nitrogen and Total Phosphorus

Filter belt press operation for de-watering sludge

